

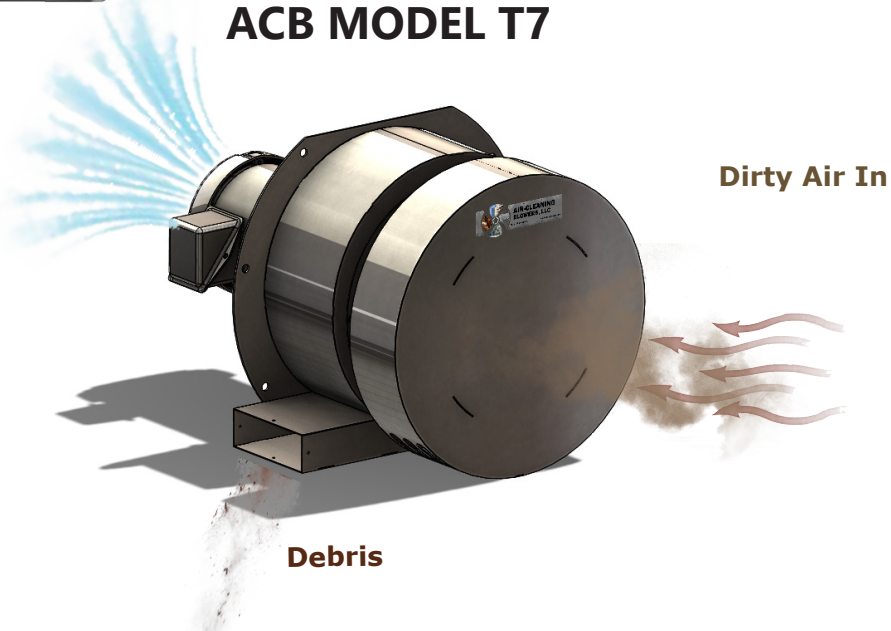


# AIR CLEANING BLOWERS™

SELF CLEANING- NO FILTER ELEMENTS TO MAINTAIN

## ACB MODEL T7

Clean Air Out



Dirty Air In

Debris

**AIR FLOW: 650-750 CFM**

### UNIT TECHNICAL SPECIFICATIONS

#### Standard Electrical Options:

(other Configurations Available Upon Request)

115 Volts / 60 Hz / 1Phase

208-230 Volts / 60 Hz\* / 1 Phase

460 Volts / 60 Hz / 3 Phase & 380-420 Volts / 50 Hz / 3 Phase

\*All units lose capacity when operating on 50 Hz as compared to 60 Hz

#### Amperage of Components:

(60 Hz Data)

• 460/3/60 - FLA = 3.4A, MCA = 4.3A, MOP = 15.0A

• 208-230/3/60 - FLA = 7.9A-6.7A, MCA = 9.9-8.4A, MOP = 15.0A

• 208-230/3/60 - FLA = 7.5A, MCA = 10.0A, MOP = 15.0A

• 460/3/60 - FLA - 4.6A, MCA = 6.0A, MOP = 15.0A

Most units can run on 50Hz current, without adaptation, but with reduced capacity and RPM. Additional models available to operate on special voltages.

Standard models are 18-gauge steel cabinets and a 12-gauge mounting plate.

Metal material options: Aluminum, 304 Stainless Steel or 316 Stainless Steel.

Inlet hoods are removable to facilitate installation, but necessary for safe functioning of the standard units, unless directly connected to duct work.

Units meet IP54 or higher standard. They can meet NEMA 4X standard if made of type 304 or type 316 stainless steel and appropriate material for impeller.

### APPLICATIONS

Manufacturing

Medical

Data Center /  
Clean Rooms

Mining / Oil /  
Tunneling

Office / Corporate

Food Processing

Military /  
Government

Agriculture

Transportation

School / Institution

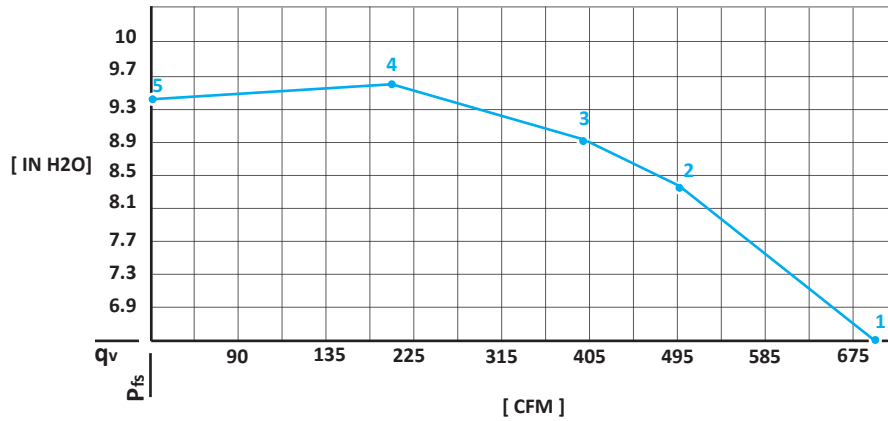
Air Cleaning Blowers, LLC

1521 US HWY 9W BLDG 4 C/D,  
Selkirk, NY 12158, USA

[www.AirCleaningBlowers.com](http://www.AirCleaningBlowers.com)

+1 (518) 635-4169

## AIRFLOW PERFORMANCE



\* All values labeled in the graph and table are estimates.

Point	Power Supply V	Frequency Hz	Airflow CFM	Pressure IN H2O.
1	460	60	700	6.5
2	460	60	500	8.3
3	460	60	400	8.9
4	460	60	200	9.6
5	460	60	0	9.4

## OPTIONS

- |   |  |
|---|--|
| Heating Elements  | 1.5 to 20 kW of electrical-resistance heat using corrosion-resistant tubular incoloy elements (not light-weight wires).  |
| Collecting Particles  | In the case that the material being removed from the air or other gas has value, various adaptations can channel the material to a collection point. For some models, ACB can offer optional, reusable particle-collection bags. |
| Housing for Downstream Specialty Filter Media                         | Activated carbon and other chemical-removing bulk media or filter elements to remove finer particles than the ACB removes.   |
| Thermostat  | To control the airflow or to warn user of high or low temperatures.  |
| Adaptation for Installation On/In Vertical and other Air Conditioners | Provide changes of air and/or pressurization and purging to enclosures served by the Air Cleaning Blowers™.  |
| Hazardous-Area Controls   | To provide NFPA Type X, Y, or Z purging and pressurization.  |
| Adaptation for Hazardous (Explosive) Ambients                         | NEC Class I Groups A, B, C, or D, Class II Groups F or G, or Class III Division/Zone 2 or Class I Groups C or D, Class II Groups E, F, or G, or Class III, Division/Zone 1 or 2 and their ATEX and IECEx equivalents.            |



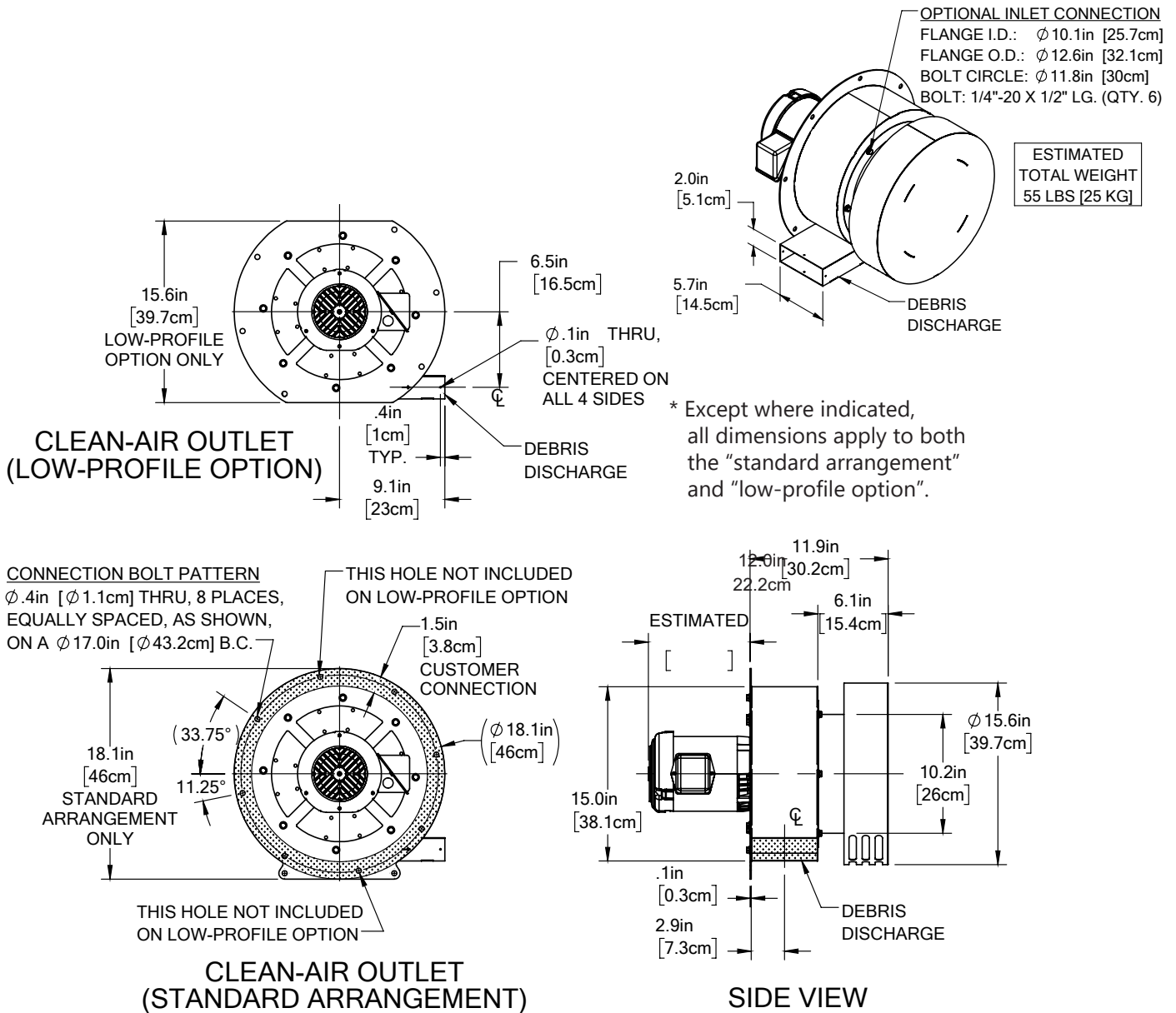
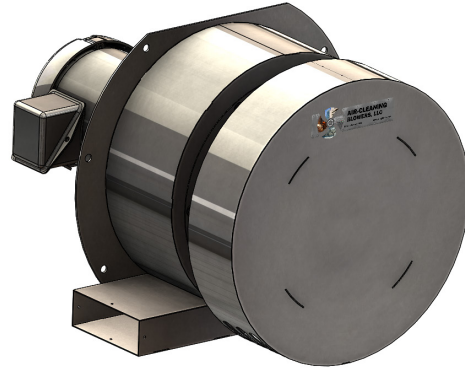
**Air Cleaning Blowers™, LLC**  
[www.AirCleaningBlowers.com](http://www.AirCleaningBlowers.com)  
 +1 (518) 635-4169

1521 U.S Route 9W  
 Building 4C/D  
 Selkirk, NY 12158

## DIMENSIONS & INSTALLATION

ACB units typically bolt to a wall. They require no additional support, unless the wall cannot support the weight indefinitely. When ACBs are installed on a wall, the passage through the wall can be lined with a duct, if desired. These units are designed to connect directly to standard sized ducting and their flanges. Most units come equipped with a cord for connection to a junction box.

Inside/through-the-wall options are also available.



**Air Cleaning Blowers™, LLC**  
www.AirCleaningBlowers.com  
+1 (518) 635-4169

1521 U.S. Route 9W  
Building 4C/D  
Selkirk, NY 12158



# AIR CLEANING BLOWERS™

SELF CLEANING- NO FILTER ELEMENTS TO MAINTAIN

## Build Your Own Model (Number):

In order to properly specify your ACB, you must make selections in each of the categories: electrical, heat, cabinet material, impeller material, exterior finish, and hazardous location. The only category that is completely optional is "additional options" and it can be omitted if you do not have any special needs.

The electrical codes available for your ACB specification are: A, B, C, E, F, G, H and X. Select your electrical configuration using one of the codes listed below ( ). Next select a code for your desired heat option ( ).

The unit is made up 18 gauge material, with the choice of code(s): A, 4, 6, T ( ) and with your choice of finish ( ). The impeller material is ( ). Note the impeller material most common for this model is code(s): A.

Next select the desired hazardous (explosive) - location rating if applicable ( ). This will complete the mandatory fields necessary to order or specify your Air Cleaning Blower™.

You can browse through the additional options / special conditions / custom modifications and select and add a code based on your additional needs, if any.

## Choose your model by filling out the blanks with the appropriate code from the list below!

<b>T</b>							
<b>AIRFLOW</b>	<b>ELECTRICAL</b>	<b>HEAT</b>	<b>CABINET</b>	<b>IMPELLER</b>	<b>EXTERIOR FINISH</b>	<b>HAZARDOUS LOCATION</b>	<b>ADDITIONAL OPTIONS</b>

### AIRFLOW (NOMINAL)

0	0-50 CFM
1	75-125 CFM
2	175-225 CFM
3	225-275 CFM
4	275-350 CFM
5	350-450 CFM
7	650-750 CFM
8	750-850 CFM
10	950-1200 CFM
20	1850-2250 CFM
35	3000-4500 CFM
50	4500-5500 CFM
75	7000-8000 CFM
100	9500-11000 CFM
150	14000-16000 CFM
#	# x 1000 = CFM

### HEAT

CODE	HEAT / KW
N	NO HEAT
1	1 kW
2	2 kW
3	3 kW
4	4 kW
5	5 kW
6	6 kW
7	7 kW
8	8 kW

### CABINET & IMPELLER

CODE	MATERIAL
F	FIBERGLASS
R	FIBERGLASS REINFORCED
A	PLASTIC
4	ALUMINUM
6	STAINLESS STEEL 304
P	STAINLESS STEEL 316
D	POLYPROPYLENE
L	LDPE
Y	ALS

### EXTERIOR FINISH

CODE	EXTERIOR FINISH
4	#4 SATIN METAL FINISH
P	POWDER COATED PAINT
A	ANODIZED
M	MILL FINISH
N	NICKLE PLATING
G	GALVANIZED STEEL
B	BLACK OXIDE
V	PASSIVATION COATING
Y	SPRAY PAINT

### ELECTRICAL

CODE	AC 60HZ	AC 50 HZ
A	115V / 1 PH	
B	220-240V / 1 PH	220-240 V / 1 PH
C		220 V / 1 PH
E	277V / 1 PH	220-240 V / 1 PH
F		180-260 V / 1 PH
G	208-230V / 3 PH	200-240 V / 3 PH
H	200-220V / 3 PH	200-220 V / 3 PH
J	415V / 3 PH	415 V / 3 PH
K	575V / 3 PH	
L	208-230V / 1 PH	220 V / 1 PH
M	460V / 3 PH	380-420 V / 3 PH
N	460V / 3 PH	
P		380-420 V / 3 PH
Q	208-230 460V 3PH	208-230 460V / 3PH
R	380 V / 3 PH	
X	208-230 380-460V 3PH	380-420V / 3 PH
Y	115 V / 1 PH / 400 HZ	
Z	115 V / 3 PH / 400 HZ	
S	SHAFT - MOUNTED	
D(#)	DIRECT CURRENT (VOLTAGE)	

### ADDITIONAL OPTIONS

CODE	ADDITIONAL OPTIONS / SPECIAL CONDITIONS
-AB-	AIR CURTAIN ATTACHMENT
-AC-	COOLING ELEMENT INCLUDED
-B-	BASE
-CS-	CEILING SUSPENDED
-EC-	ELECTRONICALLY SUSPENDED
-F-	FLEXIBLE DUCT FOR CLEAN AIR DISCHARGE
-FD-	FLANGE ON DEBRIS DISCHARGE FOR DUCT OR BAG
-FF-	OR BAG
-H-	FLANGE ON CLEAN AIR DISCHARGE FOR DUCT
-NE-	HUMIDISTAT INCLUDE
-PX-	NO ELECTRONICS
-PF-	PRESSURIZATION TYPE (X, Y, or Z)
-Q-	MOUNTING FOR POST FILTER
-RM-	SUPPLEMENTAL SOUND DAMPENING
-SM-	ROOF MOUNTING KIT
-T-	STAND MOUNTED
-UV-	

### HAZARDOUS LOCATION

CODE	HAZARDOUS LOCATION
N	NONE
H	HARSH DUTY
E	EXPLOSION

**GROUP(S):**  
 [A] Acetylene [E] Metal Dust  
 [B] Hydrogen [F] Carbon-based  
 [C] Ethylene [G] Nonconductive Dust  
 [D] Propane

**CLASS** I OR II OR III  
**DIVISION** 1 OR 2

**DISTRIBUTED BY:**

Designed and manufactured in the U.S.A. under one or more of the following Patents #9,259,675 #10,118,115, with other patents pending. 33T00-250228-1145 ACB T7 KNS